

Fluoroscans® Insight-FD Mini C-arm System

Redefining Mini C-arm Technology



FLUOROSCAN[®]
InSight-FD

HOLOGIC[®]

The Next Generation in Mini C-arm Imaging

The Fluoroscanner® Insight-FD mini C-arm system defines the versatility of imaging capabilities needed within your surgical suite, regardless of how challenging the extremity procedure may be. The result: Smart engineering that translates into functionally strong, user-friendly, and time-efficient features.



Performance-driven and State-of-the-art Flat Detector Technology

Innovation

Industry performance enhancements include:

- **New flat detector technology**
 - Offers a streamlined thin profile for improved workspace access.
 - Exclusive rotating detector and collimator enhance surgical area positioning.
 - Dual mode flat detector with full field and magnified centered square field of view.
 - High resolution detector offers superb image quality with dose optimization for clear anatomical visualization.

- **New C-arm design for improved ergonomics.**
 - New C-arm designed with forward tube source offers unmatched arch depth for greater flexibility.
 - Full 120° range of motion, both forward and back, provides exceptional maneuverability and flexibility.
 - Flat surface beneath the detector allows for efficient table-top positioning.



Flat detector rotation is an industry exclusive from Hologic.



20" (50.6 cm) arch depth & thin profile for table-top positioning.

FLUOROSCAN[®]
InSight-FD

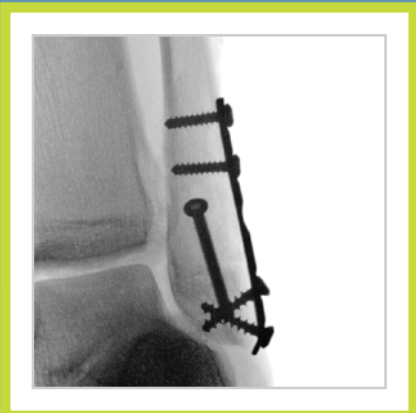
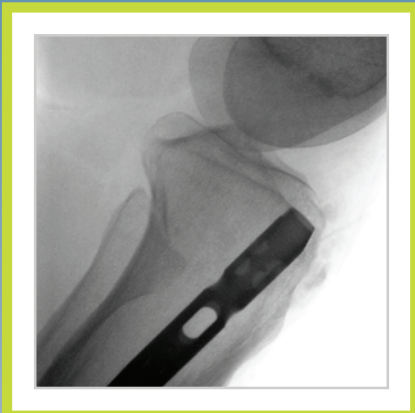
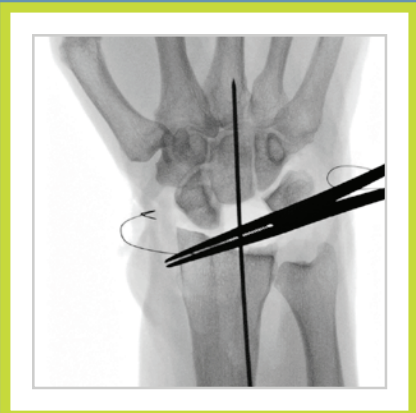
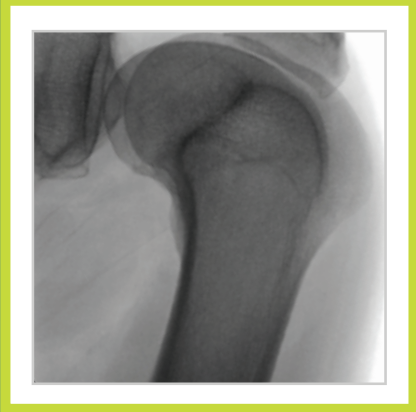
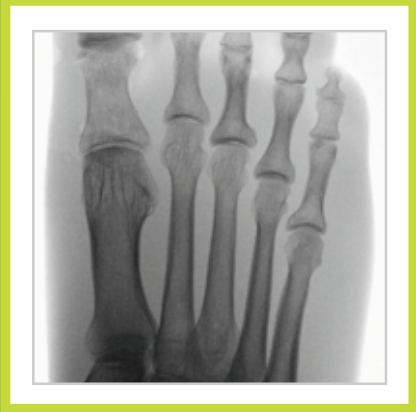
Image Quality to Rival Standard X-ray

The Fluoroscanner® InSight-FD system's sharp, high quality images allow for instant clinical confidence right in the procedure or operating room. The new flat detector and image processing algorithms deliver superb, distortion-free images and the system's touch-screen controls offer effortless image adjustment and rotation for clear and accurate visualization.



Multi-function
wireless foot pedal.
Safe & convenient.

Image Gallery



Efficiency Rolled into a Compact Extremity System



Versatility to perform your extremity procedures

- HD touch-screen monitor with finger touch rotation and easy to understand command buttons.
- Adjustment-free imaging with automatic exposure as well as motion and metal detection.
- Tilt and swivel capabilities to orient the monitor for best viewing.



User-friendly controls right where you need them

- Convenient handle and tube-head controls for fine tuning when needed.
- Laser alignment light to help guide the imaging to the precise and appropriate location.
- Single press X-ray exposure right at your fingertips.



Convenient mobility and flexibility

- The Fluoriscan® InSight-FD mini C-arm system is lightweight and can be easily moved from room to room.
- The system folds into a tight mobile package for quick and efficient storage.
- Full range of motion provides improved maneuverability and positioning.

Fluoroscanner[®] InSight-FD Mini C-arm

1 Image quality to rival standard X-ray

- New image processing algorithms deliver superb distortion-free image quality.
- System allows larger anatomy imaging with dose optimization.
- Automatic imaging with dose optimization for all extremity imaging.

2 Better workflow and improved productivity

- Adjustment-free imaging with automatic motion and metal detection.
- User-friendly sterile field controls to meet surgeon needs.
- Touch-screen interface with easy-to-understand controls; swivel & tilt capable.
- Customizable imaging parameters for surgeon-specific preferences.

3 Peripherals and options to support each customer

- Wireless or wired multi-functional foot pedal.
- Wireless or wired network connectivity.
- DICOM 3.0 compliant (send, store, print & worklist).
- Multiple printer options that neatly fit into the base cabinet.
- USB and DVD export in standard industry formats.

4 Hologic offers expertise, stability and long-term investment support

- Nationwide 24 hour on-site customer support to protect your investment.
- Factory trained support personnel located across the country.
- Scope, stability and backing of a large customer-focused company.



Exclusive rotating detector and user-friendly sterile field controls meet surgeons' needs.



Flat detector sweet spot insures the anatomy of interest is always within the field of view.

**Hologic is committed to addressing the continuum
of skeletal health care, from the OR to in-office imaging.**

Just as we are leading the way in women's health imaging solutions, we are raising the bar in skeletal health imaging.

EXTREMITY MRI | EXTREMITY C-ARM IMAGING | BONE HEALTH